



**League of
Women Voters®**

Empowering Voters.
Defending Democracy.

lwvmesa.org

PO Box 4252
Grand Junction, CO
81502

E-mail:
lwvmesa@gmail.com

Website:
LWVMesa.org

Visit our
Facebook page:
www.facebook.com/
lwvmesacounty

Share our posts!

The Voter

September 2019

UPCOMING EVENTS & IMPORTANT DATES

September 2: Labor Day

September 4: Leadership Meeting, 2pm—3pm, 1160 N. 4th St., GJ

September 8: Voter Services Committee Meeting, 2pm—3pm, 1160 N. 4th St., GJ

September 9: Building a Sense of Community in Mesa County—Presented by Jeff Kuhr, Mesa County Public Health, 7pm—8:30pm, Unitarian Universalist Congregation, 536 Ouray Ave., GJ

September 16: CommTech Committee Meeting, 11am—noon, 1160 N. 4th St., GJ

September 17: Constitution Day and Citizenship Day

September 19: Go See Tour at Western Colorado Community College, 10am—11:30am, 2508 Blichmann Ave., Bldg. B, GJ (RSVP required)

September 22: Book Club, 3pm—5pm, private residence Fruita (RSVP required)

November 5: Election Day

NEWS & STUFF

Building a Sense of Community in Mesa County

Join us the evening of September 9th for a public presentation from Jeff Kuhr, Executive Director of Mesa County Public Health. Mr. Kuhr will be filling us in on all that his department is doing in Mesa County to keep us safe and healthy and in tip-top shape.



**MESA COUNTY
PUBLIC HEALTH**
Working Together for a Healthy Community

Mesa County Public Health, formed in 1948, provides a wide range of public and environmental health services to the Mesa County region. The department's mission is "to maintain and improve health through assessment of community health status, policy development to support effective programs, and assurance of high quality, effective education (*Continued*)"

"Until I feared I would lose it, I never loved to read. One does not love breathing." - Harper Lee

NEWS & STUFF (cont.)

Building a Sense of Community in Mesa County

(continued from previous page) and services" (<https://health.mesacounty.us/about-us/>). Visit the Mesa County Public Health website (<https://health.mesacounty.us/>) to learn more about their programs and services.

Event Info: Open to the Public, September 9th @ 7pm—8:30pm, Unitarian Universalist Congregation, 536 Ouray Avenue, GJ

Book Club Kicks-Off on September 22nd

Our first Book Club gathering is scheduled for Sunday, September 22nd 3pm—5pm! We will meet at Toni Brammeier's house in Fruita CO. Please RSVP to Toni @ tonibrammeier@gmail.com or 925-285-9493 for the house address. If you need a ride or would like to carpool with other members, please let Toni know when you RSVP so she can help coordinate the carpool(s).

We'll be deciding on a permanent meeting schedule and locale at our first meeting. If you are not able to attend in September, but would like to participate in the coming months, please contact Toni with your scheduling preferences so she can bring them to our first meeting. Also, we will choose what books to read in December through May so please bring your suggestions!

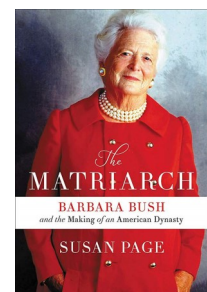
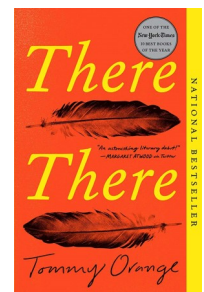
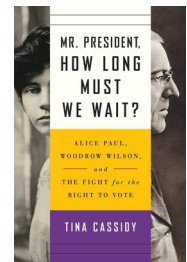
Book Selections

September—*Mr. President, How Long Must We Wait* by Tina Cassidy (Non-fiction, History, 19th Amendment, Women's Rights)

October—*There There* by Tommy Orange (Fiction, Native American Culture, Economic Inequality, Gun Violence)

November—*The Matriarch: Barbara Bush and the Making of an American Dynasty* by Susan Page (Non-fiction, Biography, Government)

Book Club Meeting: September 22 @ 3pm—5pm, private residence in Fruita. RSVP to Toni at tonibrammeier@gmail.com or 925-285-9493 for the house address.



City Market Community Rewards

Help us earn money every time you shop at City Market!



Enroll your City Market Value Card in the Community Rewards program (organization #WJ005) and City Market will donate a portion of proceeds to LWV of Mesa County.

"An investment in knowledge, pays the best interest." - Benjamin Franklin

NEWS & STUFF (cont.)

Deb Tittle Appointed Chairperson

Member Deb Tittle has graciously agreed to serve as our chairperson for the 2019-2020 season. Deb was appointed by a unanimous vote at the August 7th leadership meeting. As per the LWV Mesa County bylaws, Deb will serve until the 2020 Annual Meeting at which time the general membership will have the opportunity to elect her to a full two-year term. Please join us in welcoming Deb to her new role.

Let's "Go See" What's Happening at Western Colorado Community College

Join us as we kick-off our 2019-2020 LWV season with a Go See Tour of Western Colorado Community College. We'll tour the campus and learn all about how our local community college supports Mesa County's residents of all ages. And for those of you that work up an appetite with all of that touring and learning—we offer you the option to stay and lunch with your fellow Leaguers at WCCC's Chez Lena. Come for the tour, stay for the lunch! Or just come for the tour!

Event Info (RSVP required)

WCCC Campus Tour: 10am—11:30am

(Optional) Lunch at WCCC's Chez Lena: Immediately following the tour. Prix fixe menu includes a 3-course meal for \$16.38/person.

Please RSVP by September 15th to Toni at tonibrammeier@gmail.com or 925-285-9493.

LWV of Mesa County Needs YOU!

Are you just itching to get more involved? Are you bursting with ideas on how the League can be more effective? Are you interested in helping to shape the future of our local chapter? LWV is looking for talented, energetic people LIKE YOU to fill the following roles:



Spokesperson

Be the "voice" of LWV of Mesa County. The Spokesperson serves as the point of contact for local media organizations and helps to promote the League's mission and events around the Grand Valley. This position is ideally held by an individual with 2+ years of experience in the League with a good understanding of the League's mission and positions. *(Continued)*

Contribute To Future Editions of **The Voter!**

Have you recently read an interesting article that you think LWV members would like to read? Do you have a good story to tell? How about a funny joke? The team behind The Voter is always happy (and appreciative) to accept member contributions. Just mail what you've got to lwwmesa@gmail.com and we'll gladly add it to a future edition.

"The meaning of life is to find your gift. The purpose of life is to give it away." - William Shakespeare

NEWS & STUFF (cont.)

LWV of Mesa County Needs YOU! (cont.)

This position requires a 9-month commitment with the option for election to an additional 2-year term at the 2020 Annual Meeting.

Primary duties include:

- Attend the monthly leadership meeting
- Serve as point of contact for local media
- Send monthly press releases to local media outlets (note that creating the press releases is a leadership team effort)
- Coordinate interviews with local media to promote league events (don't feel comfortable in front of a camera? No biggie. This one is entirely optional.)

Secretary

Are you organized? Are you a good listener? Then boy-oh-boy, do we have the perfect position for you. The secretary is responsible for recording meeting minutes and compiling documentation for formal member meetings. This position is ideal for a Type-A member who is looking to put her strengths to good use.

Primary duties include:

- Attend the monthly leadership meeting
- Record the meeting minutes
- Compile documentation for the Annual Meeting
- Additional "librarian" duties may be assigned based on secretary's availability

If you're interested in either of these positions (and we do hope you are!), please contact the leadership team at lwmesa@gmail.com.

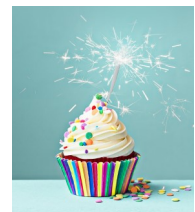
Happy Birthday To All Of You September Babies

Do you share a birthday with one of these amazing ladies?

September 6: Jane Addams, suffragist

September 14 Margaret Sanger, birth control activist

September 26 Serena Williams, tennis great and winner of 23 Grand Slam singles titles



Help Us Reach 1,000 Likes in 2020

You can help us grow by liking, commenting on, and/or sharing our posts. Each time you interact with us on social media, you expand our reach. So, like us! Follow us! Share us! Help us reach 1,000 page likes in 2020.

www.facebook.com/lwmesa-county

"Education is not the filling of a pail, but the lighting of a fire." - W.B. Yeats

THOUGHT THIS MIGHT INTEREST YOU...

Recently, *The Atlantic* published an article in its ongoing 'Our Towns' series entitled "The Choices Facing Community Colleges". The article's authors, Deborah and James Fallows, spent time at the Michigan Community Association convention meeting with college leaders, learning about the unique ways in which community colleges support their communities. The authors also touched on how community colleges fit into the current national conversation about post-high school education.

In anticipation of our upcoming Go See Tour at Western Colorado Community College, we thought the following highlights from their study might interest you...

...

Based on what we've seen, I would argue that while every branch of American education is always "important," from preschool and K-12 to the most intense research universities, community colleges really are the crucial institutions of this economic and political moment. That is because:

1. *They're local- or state-based, and thus far freer to experiment, adapt, and innovate than most federally run institutions are at this moment of paralyzed national politics.*
2. *They're more and more the institutions that feel responsible for matching people who need opportunities with the fastest-growing opportunities of this era. (For instance, in much of the country there have been more openings than candidates for relatively high-wage "skilled trade" jobs: from welding and construction, to engine and robotics maintenance, to many aspects of the ever-expanding health-care industry. Many community colleges emphasize preparing graduates for jobs that are in demand right now, while also developing skills and adaptable-learning techniques that will apply for whatever jobs emerge a decade from now.)*

Because they're often dispersed across a state, with branches in smaller cities and rural areas, many of them have taken a lead in devising regionwide and rurally focused development plans. Most everyone knows that America outside the big cities faces its own set of challenges, from attracting new residents to creating new economic strongholds to dealing with physical and mental-health problems. The people working hardest toward solutions, at least among those I've met, are disproportionately at community colleges.

...

What Deb and I learned when talking with community-college leaders in Traverse City was about the choices that they are facing—as are other members of the loose confederation of educators who are doing so much to shape the economic and civic future of the country. Based on what we heard, I think this is the list of next big choices:

- *In this era of increasing nationwide interest in "placemaking," are community colleges positioned to take the lead as stewards of a community's development? Or do they need to follow other local institutions?*
- *How does a successful college set the balance between training people in hopes that they'll stay in the area and training them for success, wherever they might end up? Should the prospect of graduates moving away affect an institution's investment in them?*
- *How does a successful college think about the balance between training for specific skills, and general adaptability? How does it balance between the jobs of today, and those of a decade or two from now?*
- *What's the proper way to work with private companies in the area? Is it all positive? What are the pitfalls and guidelines?*
- *When does it make sense to take a regional, or even statewide, approach, as opposed to programs aimed at each college's local area?*
- *When does it make sense to seek out collaborations with research universities or four-year colleges? How should the "culture" of community colleges evolve to reflect their newly central role in American opportunity? Is there an even bigger place for ceremonies, "pomp and circumstance," and other ways to add external signs of prestige to this experience?*

You can read the full article at <https://www.theatlantic.com/notes/2019/08/choices-community-colleges/595696/>

"I'm a leader not a follower. Unless it's a dark place, then you are going first." - Unknown

ADMINISTRIVIA

With Love, From The Leadership Team

Have you noticed the mornings are feeling just a little bit cooler as of late? The sun is setting just a little bit earlier. Sigh. These waning days of summer have us savoring the long days and sunshine while they last—making warm memories to hold close and carry us through the coming winter months.

But while we may be feeling a little melancholy at the thought of packing away our flip flops for the season—we're also jazzed to be going back to school AND kicking off the 2019-2020 LWV season!!! This is going to be a big season full of celebration as LWV turns 100 years old. We also have a general election to prepare for. Voters to educate. Issues to advocate for. Friends to make. Goodness! Get plenty of rest. Ladies and Gentlemen, because we're about to get busy, busy, busy!

You can stay on top of all of the upcoming events, committee meetings, programs, clubs, etc. by following us on Facebook (@lwvmesacounty) and/or keeping an eye on our online event calendar (<http://lwvmesa.org/vote/calendar/>). And if you've got ideas for additional programs, events, etc. please send those to lwvmesa@gmail.com. We'd love to hear from you!

With Love,
The Leadership Team



P.S. We 'heart' feedback. Let us know how we're doing by emailing us at lwvmesa@gmail.com. And especially let us know if you're not receiving notice of upcoming events and meetings.

The Leadership Team

Have a question or concern? Email the team at lwvmesa@gmail.com

Our current Leadership Team members:

- * Deb Tittle, Chairperson
- * Henry Snyder, Treasurer
- * Robyn Parker, Voter Services Coordinator
- * Toni Brammeier, CommTech Committee Lead
- * Peggy Rawlins, Advisor
- * Cynthia Edwards, Hospitality / Voter Services Team



Not Yet a Member?

By joining the League you not only support our local chapter, but your membership also helps to support the League's grassroots efforts at the state and national levels. Joining also gives you the opportunity to vote in League elections and help us shape the future of the organization for years to come. So, what are you waiting for? Join today!

<http://lwvmesa.org/vote/join/>

The League of Women Voters® of Mesa County, a nonpartisan political organization, encourages informed and active participation in government, works to increase understanding of major public policy issues, and influences public policy through education and advocacy.


OUR SPONSORS

A big THANK YOU to our local sponsors. Please note (and support!) these contributors.

THE PALISADE CAFÉ 11.0
 ~ Palisade Fresh Eatery ~
 Slightly whimsical. Maximum fresh.
 113 W. 3rd St., Palisade, Colo. 81526
 (970) 464.2888 PalisadeCafe11.com

B.E. Butler Photography
 970-314-1026
www.bebutler.com bebutler@q.com
B.E. Butler Photography 970-314-1036 www.bebutler.com bebutler@q.com


SummitWest Care
 Compassionate Healing at Home
 Formally known as
 Home Care of the Grand Valley
 phone: 970-263-0202 fax 970-243-6855
 1131 N 21st Street. Grand Junction, CO

 **DUFFORD WALDECK
 MILBURN & KROHN LLP**
 Attorneys at Law

Barbara R. Butler
 PARTNER

 744 Horizon Court, Suite 300 / Grand Junction, CO 81506
 TEL 970.248.5857 FAX 970.243.7738 / butler@dwmk.com

**Unitarian Universalist
 Congregation of the Grand Valley**

 Understanding the wisdom at the
 core of all spiritual traditions
 536 Ouray Ave.
www.grandvalleyuu.org
 (970)257-0772
administrator@grandvalleyuu.org

KWSi-LP
Radio 100.3 fm

 Mesa County's Source for Voting Information
 Visit kwsi.org
 for living streaming and program info
 P.O. Box 1234, GJ, CO 81502 970-400-1103