



**League of
Women Voters®**

Empowering Voters.
Defending Democracy

lwvmesa.org

PO Box 4252
Grand Junction, CO
81502

E-mail:
lwvmesa@gmail.com

Website:
LWVMesa.org

Visit our
Facebook page:
www.facebook.com/
lwvmesacounty

Share our posts!

The Voter

It's membership
renewal time!
Renew online at
[http://lwvmesa.org/
vote/join/](http://lwvmesa.org/vote/join/)

January 2020

IN THIS ISSUE

| | |
|--|-----|
| Upcoming Events & Important Dates | 1 |
| News & Stuff | 1-4 |
| Committee & Club Corner | 5 |
| Get Involved! | 6 |
| Administrivia | 7 |
| Our Sponsors | 8 |

UPCOMING EVENTS & IMPORTANT DATES

January 1: Happy New Year!

January 8: Leadership Meeting, 2pm—3pm, 1160 N. 4th Street, GJ

January 18: Western Colorado Women's March, meet at KWSI-LP's red Jeep in front of the old courthouse at 6th & Rood in GJ at 12:30pm.

January 20: CommTech Committee Meeting, 11am—noon, 1160 N. 4th Street, GJ

January 29: Book Club, 9am—11am, The Artful Cup, 3090 N 12th St., GJ

NEWS & STUFF

Colorado Primary Election On March 3, 2020

Colorado will hold its first primary election in 20 years on Mar. 3. Ballots will be mailed out starting Feb. 10 (ballots going to overseas and military voters are mailed on Jan. 18).

Colorado voters have until Feb. 3 to update the party affiliation on their voter registration in order to receive the primary ballot for that party. Unaffiliated voters will receive the ballots of both major political parties, but may only return the ballot for one party.

(Continued on next page)

"For last year's words
belong to last year's
language
And next year's words
await another voice." -
T.S. Eliot

NEWS & STUFF (cont.)

***(continued)* Colorado Primary Election On March 3, 2020**

The primary election will be held on Super Tuesday, Mar. 3. A total of 15 states and U.S. territories will hold primary events on this day.

You can support the League's mission by encouraging friends and family to vote in this very important election. Let's make our voices heard!

Remember, Colorado residents can register to vote and check their existing registration online at govotecolorado.com.

Did You Know...?

**Individuals who turn 18 before
November 3, 2020 can vote in
Colorado's primary election on
March 3, 2020.**

Pass it on!

Women's March on January 18th, 2020

It's time to unite (once again) and march for equal rights and justice for all! Join us and the rest of Mesa County as we rally for a more perfect democracy.

For those who plan to march with the League, we will meet at 12:30pm at the old county courthouse—look for KWSI-LP's red Jeep (our radio friends will be providing the music for the event). The march begins at 1pm and will take us back to the old county courthouse on 6th and Rood. The rally at the courthouse begins at 2pm—there will be speakers and music!

If you do not wish to march, please consider meeting us for the rally in front of the courthouse at 2pm.



City Market Community Rewards

Help us earn money every time you shop at City Market!



Enroll your City Market Value Card in the Community Rewards program (organization #WJ005) and City Market will donate a portion of proceeds to LWV of Mesa County.

"Celebrate what you want to see more of."—Tom Peters

NEWS & STUFF (cont.)

LWVCO Priorities for 2020

Last month, some of our members met with LWVCO president Ruth Stemler and several LWVCO members over a delicious breakfast at Las Marias in GJ. One of the topics of conversation was priorities for the coming year. Ruth and team indicated the following as the big issues to promote in 2020. LWV Mesa County is up to the challenge!

- **National Popular Vote:** LWVCO has taken a position in favor of the National Popular Vote Pact which will be on the ballot in Nov. 2020. LWV of Mesa County has not yet taken an official position on this issue but we will be promoting education around the Popular Vote and the current electoral system throughout the year.
- **#FairMaps (Redistricting, Gerrymandering):** LWV is offering a modest grant to Leagues that tackle this issue head-on throughout the year. LWV Mesa County leadership is currently collecting ideas for how we might promote this important topic—please email us at lwvmesa@gmail.com with your suggestions.
- **Census 2020:** LWV of Mesa County is hoping to host a program this spring that discusses citizenship and the Census. Please keep an eye out for more information as our plans come together on this one.
- **Money In Politics:** LWV Mesa County leadership is currently collecting ideas for how we might promote this important topic—please email us at lwvmesa@gmail.com with your suggestions.
- **(Internal League) Communication & Technology Updates:** LWVCO has bestowed a generous grant on LWV Mesa County for the purpose of upgrading our current technology. Our CommTech team is already hard at work setting up the new administrative software and website. It looks really nice, folks. We're excited. Also, we will be offering introductory classes to our members once the new system is live. More to come on that. Stay tuned!



Help Us Reach 1,000 Likes in 2020

You can help us grow by liking, commenting on, and/or sharing our posts. Each time you interact with us on social media, you expand our reach. So, like us! Follow us! Share us! Help us reach 1,000 page likes in 2020.

www.facebook.com/lwvmesacounty

COMMITTEE & CLUB CORNER

Voter Services Committee

The Voter Services team is committed to educating voters and promoting Get Out The Vote initiatives around Mesa County.

Contact Robyn Parker at gjrobyn@gmail.com if you're interested in joining our Voter Services committee.

Communications & Technology Committee

The CommTech team is hard at work redesigning our LWVmesa.org website in preparation for our upcoming migration to Club Express. The team is also busy spreading LWV's mission and advertising upcoming events via a variety of media formats.

The CommTech committee meets at 11am on the third Monday of each month. Contact Toni Brammeier at tonibrammeier@gmail.com if you're interested in joining our committee.

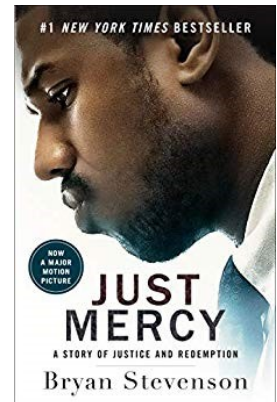
Book Club

Our January book selection is *Just Mercy: A Story of Justice and Redemption* by Bryan Stevenson .

Catch up on past selections and get ready for future reads at <http://lwvmesa.org/vote/book-club/> .

The Book Club meets at 9am on the last Wednesday of each month at The Artful Cup (3090 N 12th St., GJ). Haven't read the book? Come anyway!

Contact Toni Brammeier at tonibrammeier@gmail.com with questions about the Book Club.



Contribute To Future Editions of **The Voter!**

Have you recently read an interesting article that you think LWV members would like to read? Do you have a good story to tell? How about a funny joke? The team behind The Voter is always happy (and appreciative) to accept member contributions. Just mail what you've got to lwvmesa@gmail.com and we'll gladly add it to a future edition.



GET INVOLVED!



Serve on the Leadership Team!

Become an ardent defender of democracy! Join the LWV Mesa County leadership team and use your talents to advocate for the issues that matter most to you and our community!

Our leadership team members get involved, at various levels, in program & event planning, League communications, behind the scenes administration, and anything else that might come up. We believe that a diverse mix of experiences makes for a stronger League and we welcome fresh ideas and new perspectives. Whether you have a lot of time to give or just a little bit, there is a place for you on the team.

Our leadership team meets the first Wednesday* of each month at 2pm at 1160 N 4th St, GJ (KWSI-LP radio station, look for the red door). **Are you interested in joining the leadership team but cannot make the monthly Wednesday afternoon meetings? Let us know at lwwmesa@gmail.com.**

*Our meeting dates occasionally change so please check the event calendar at <http://lwwmesa.org/vote/calendar/> for up-to-date meeting info.

Renew Your Membership

Well folks, it's that time of year again—membership dues are due for renewal. Remember, your dues not only support LWV advocacy at the national and state level, but they also allow us to spread the League's mission right here in Mesa County. Truly, we couldn't do what we do without the generous contributions of our members.

You can renew online at <http://lwwmesa.org/vote/join/>.

Not yet a member? Join the LWV fight for a more equal democracy line at <http://lwwmesa.org/vote/join/>.

"Cheers to a new year and another chance for us to get it right."—Oprah Winfrey

ADMINISTRIVIA

With Love, From The Leadership Team

Happy New Year! 2020 is here and we can hardly believe it. We have so. Much. To. Do. This. Year. There are multiple elections to plan for (including the first primary election in 20 years!). Important issues to promote (the educational opportunities are endless). New voters to register. New technology to learn. Books to read. Friends to make. Again. So. Much. To. Do.

But while our ideas are churning and our excitement is bubbling, we cannot forget to take care of ourselves and each other. The current divisions in our country are likely to become more extreme as the 2020 general election approaches. Let's all pledge to support each other throughout the year by listening and promoting our commonalities while working to create a more perfect democracy.

And finally, a reminder that our League is only as strong as our members' involvement. We encourage you to get involved even if you only have a little bit of time to give. It is only with the support of our members that we can continue to carry out our important work here in Mesa County.

With Love,
The Leadership Team



The Leadership Team

Have a question or concern? Email the team at lwvmesa@gmail.com

Our current Leadership Team members:

- * Deb Tittle, Chairperson
- * Henry Snyder, Treasurer
- * Robyn Parker, Voter Services Coordinator
- * Toni Brammeier, Lead-CommTech Committee
- * Peggy Rawlins, Advisor
- * Cynthia Edwards, Hospitality / Voter Services Team



Not Yet a Member?

By joining the League you not only support our local chapter, but your membership also helps to support the League's grassroots efforts at the state and national levels. Joining also gives you the opportunity to vote in League elections and help us shape the future of the organization for years to come. So, what are you waiting for? Join today!

<http://lwvmesa.org/vote/join/>

The League of Women Voters® of Mesa County, a nonpartisan political organization, encourages informed and active participation in government, works to increase understanding of major public policy issues, and influences public policy through education and advocacy.

OUR SPONSORS

A big THANK YOU to our local sponsors. Please note (and support!) these contributors.

THE PALISADE CAFÉ 11.0

~ Palisade Fresh Eatery ~
Slightly whimsical. Maximum fresh.
113 W. 3rd St., Palisade, Colo. 81526
(970) 464.2888 PalisadeCafe11.com



B.E. Butler Photography
970-314-1026
www.bebutler.com bebutler@q.com
B.E. Butler Photography 970-314-1036 www.bebutler.com bebutler@q.com



SummitWest Care
Compassionate Healing at Home

Formally known as
Home Care of the Grand Valley

phone: 970-263-0202 fax 970-243-6855
1131 N 21st Street. Grand Junction, CO



**DUFFORD WALDECK
MILBURN & KROHN LLP**
Attorneys at Law

Barbara R. Butler
PARTNER

744 Horizon Court, Suite 300 / Grand Junction, CO 81506
TEL 970.248.5857 FAX 970.243.7738 / butler@dwmk.com

**Unitarian Universalist
Congregation of the Grand Valley**

Understanding the wisdom at the
core of all spiritual traditions

536 Ouray Ave.
www.grandvalleyuu.org
(970) 257-0772
administrator@grandvalleyuu.org

KWSi-LP
Radio 100.3 fm

Mesa County's Source for Voting Information

Visit kwsilp.org
for living streaming and program info

P.O. Box 1234, GJ, CO 81502 970-400-1103